

GWINNETT COUNTY FAIR

September 16 - 26, 2010

EXHIBIT DATE
September 13, 2010



ADULT EXHIBITS

ATTENTION!
PRE-REGISTRATION IS REQUIRED

AUGUST 23, 2010 DEADLINE

Take-In: 1:00 - 6:30 p.m. Monday, September 13, 2010.

Please enter the fair grounds at Gate 1 off Davis Road.

Clothing Pick-Up: 4:00—5:30 p.m. Tuesday, September 14, 2010. (Any clothing not picked up by 5:30 p.m. will be held for general pick-up.)

Pick-Up: 2:30 - 6:30 p.m. Monday, September 27, 2010.

1. **IMPORTANT!!** All exhibits must be the work of an amateur exhibitor. Exhibits must be work completed since **September 2009** and not exhibited in any previous Gwinnett County Fair.
2. We will not accept any new items or entries that were not pre-registered by **Aug. 23rd!!!** The enclosed entry form must be returned to the Gwinnett Extension Office no later than **August 23, 2010.**
3. All exhibits must be clean and completely finished. Instructions must be followed or it will be disqualified.
4. **Exhibitors can enter only one item per class. Note: Only 10 items per exhibitor will be allowed again this year!**
5. Before submitting, exhibits must be labeled securely on the underside of items with name, address, and phone number of exhibitor.
6. Judges will consider appropriate criteria for each division.
7. When the same item qualifies for more than one category, the exhibitor, (you), will choose the one to enter. Duplicates in a category cannot be placed in miscellaneous.
8. Entries in classes without competition may receive first or second place ribbon and second place money. The prize money is **\$7.00**—1st place, **\$5.00**—2nd place and **\$4.00**—3rd place. Premiums will be paid at pick-up.
9. **THE WRITTEN JUDGES REPORT IS FINAL!**
10. For the overall winner a Certificate and a check for an additional \$50 will be presented. Total points must exceed 14 and exhibitors must have entered in at least 3 divisions. A point system will be used to determine a winner - Blue ribbon will count 3 points, Red ribbon will count 2 points and White ribbon will count 1 point. The Adult Overall Participation award winner for the past year may exhibit but will not be eligible for overall award for two calendar years.

The GCFL&A, Inc., it's Officials, and County Extension Agents are not responsible for lost, damaged, or unclaimed items.

WE DO NOT RECOMMEND EXHIBITING TREASURED ITEMS.

DIVISION 1 - Adult Food Preservation

All entries must have been preserved since **September 2009**.

Exhibitors must indicate on lid the processing method (water bath or pressure) and the processing time used, OTHERWISE IT CAN NOT BE JUDGED! Clean standard canning glass jars and standard lids must be used. All lids must be sealed. Dehydrated foods should be exhibited in canning jars but not sealed. Rings must be left on jars.

CLASS

200. Beans - Green - 1 quart or 1 pint
201. Tomatoes - Pieces - 1 quart or 1 pint
202. Tomatoes - Stewed - 1 quart or 1 pint
203. Tomatoes - Whole - 1 quart or 1 pint
204. Tomatoes - Other - 1 quart or 1 pint
205. Salsa - Tomato Based - 1 quart or 1 pint
206. Vegetables—1 quart or 1 pint
207. Soup - 1 quart or 1 pint
208. Fruit - Applesauce—1 quart or 1 pint
209. Fruit - Peaches - 1 quart or 1 pint
210. Fruit - Pears - 1 quart or 1 pint
211. Jelly - Apple - 1 pint or ½ pint
212. Jelly - Grape - 1 pint or ½ pint
213. Jelly - Muscadine or Scuppernong - 1 pint or ½ pint
214. Jelly - Other - 1 pint or ½ pint
215. Jam - Berry - 1 pint or ½ pint
216. Jam - Grape - 1 pint or ½ pint
217. Jam - Muscadine or Scuppernong - 1 pint or ½ pint
218. Jam - Other - 1 pint or ½ pint
219. Preserves - Berry - 1 pint or ½ pint
220. Preserves - Fig - 1 pint or ½ pint
221. Preserves—Peach—1 pint or ½ pint
222. Preserves - Pear—1 pint or ½ pint
223. Marmalade - 1 pint or ½ pint
224. Conserves - 1 pint or ½ pint
225. Fruit Butter - 1 pint or ½ pint
226. Cucumber Pickles - Bread & Butter - 1 pint or 1 quart
227. Cucumber Pickles - Dill - 1 pint or 1 quart
228. Cucumber Pickles - Sweet - 1 pint or 1 quart
229. Vegetable Pickles - Green Tomatoes - 1 pint or 1 quart
230. Vegetable Pickles - Pepper - 1 pint or 1 quart
231. Vegetable Pickles – Other—1 pint or 1 quart
232. Relish—Pepper Based— 1 pint or ½ pint
233. Relish - Tomato Based —1 pint or ½ pint
234. Relish—Other—1 pint or ½ pint
235. Dehydrated Foods—Fruit— ½ pint, 1 pint or 1 quart
236. Miscellaneous—1 pint or 1 quart



DIVISION 2 - Adult Clothing

All Clothing must be clean, on a hanger and covered with a clear plastic bag. Items must be made and be stitched, not purchased.
Clothing must be picked up on Tuesday, Sept. 14, 2010 between 4:00 - 5:30 p.m.

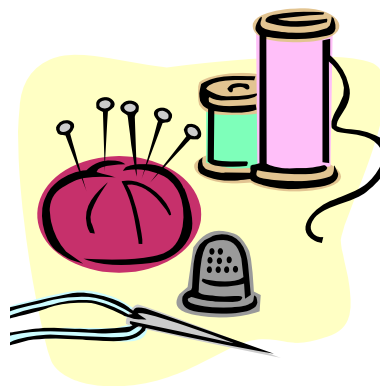
237. Adult - Skirt or Slacks
238. Adult - Blouse
239. Adult - Dress - Casual
240. Adult - "After 5"
241. Adult - Multiple Piece Outfit
242. Adult - Jumper or Jumpsuit
243. Adult - Hand Made Garment - Hand Decorated
244. Adult - Special Use - Costume, Uniform, Holiday
245. Adult - Access. - Collar, Scarf, Pocket Stuffer, etc.
246. Adult - Miscellaneous - Adult Clothing
247. Children's Dress
248. Children's Special Occasion Dress - Beauty Pageant, Flower Girl, etc.
249. Children's Skirt or Pants
250. Children's Jumper / Jumpsuit
251. Children's Sleepwear
252. Children's Multiple Piece Outfit
253. Children's - Special Use - Costume, Swimsuit
254. Children's Smocked Garment
255. Doll Clothes—must be off doll and in a clear plastic bag
256. Children's—Misc.— Children's clothing and accessories



DIVISION 3 - Adult Needlework

These items must have stitching. Needlework must be in a final form for use; pictures must be framed. Wall hangings must have fasteners or dowel for hanging. Multi-piece crafts must be mounted or appropriately attached for display. No penciled or printed guidelines should be visible. Items not meeting these criteria will be disqualified. Judges will consider uniformity of stitches, absence of visible knots or loose threads, attention is given to detail, appropriateness of materials and eye appeal. **The dimension of framed entries can be no larger than 15" X 18", frame included.** See page 6 for rules.

257. Counted Cross Stitch—Framed—18 to 22 TC
258. Counted Cross Stitch—Framed—14 & 16 TC
259. Counted Cross Stitch—Framed—11 TC
260. Counted Cross Stitch—Framed—Double count
261. Counted Cross Stitch—Small Accessories
262. Counted Cross Stitch—Stamped Pattern
263. Counted Cross Stitch—Miscellaneous
264. Crocheted—Garments—Child or Infant
265. Crocheted - Work - Coarse
266. Crocheted - Work - Fine
267. Crocheted - Work - Crocheted
268. Crocheted - Tablecloth
269. Crocheted - Afghan - Large
270. Crocheted - Afghan - Baby
271. Crocheted - Doll
272. Crocheted - Kitchen Items
273. Crocheted - Misc. - cap, scarf, booties, mittens, etc.
274. Embroidery - Ribbon
275. Embroidery - Stamped
276. Embroidery - Stamped Cross Stitch
277. Embroidery - Pillowcases (must enter a pair)
278. Embroidery - Wall hanging
279. Embroidery - Miscellaneous
280. Knitted - Afghan - Large
281. Knitted - Garments - Child or Infant
282. Knitted - Sweater
283. Knitted - Misc. - Cap, mittens, booties, scarf, etc.
284. Other-Crewel - Framed
285. Other-Needlework-Needlepoint-Framed
286. Other-Needlework-Needlepoint-Plastic Canvas-Tissue Box Cover
287. Other-Needlework-Needlepoint-Plastic Canvas-Other
288. Other-Needlework-Latch Hook-Rug
289. Other-Needlework-Pillowcases (must enter a pair)
290. Other-Needlework-Bedspread
291. Other-Needlework-Kitchen Accessories-Placemats (set of 2)
292. Other-Needlework-Kitchen Accessories
293. Other-Needlework-Wall Hanging
294. Other-Needlework-Stuffed Item-Toy
295. Other-Needlework-Stuffed Item-Doll-Single
296. Other-Needlework-Stuffed Item-Dolls-Pair
297. Other-Needlework-Stuffed Item-Original
298. Other-Needlework-Stuffed Item-Decorative
299. Other-Needlework-Stuffed Item-Animal
300. Other-Needlework-Miscellaneous
301. Quilt-Machine Pieced-Machine quilted
302. Quilt-Machine Stitched-Hand quilted
303. Quilt-Totally Handmade
304. Quilt-Handmade, Machine Accents (appliqué, binding)
305. Quilt—First quilt
306. Quilt—Original
307. Quilt—Pre-Printed—Hand Quilted
308. Quilt—Cathedral Window
309. Quilt—Other
310. Baby Quilt—Embroidery
311. Baby Quilt—Original Design
312. Quilted Wall Hanging - Other
313. Quilted Kitchen Item
314. Quilted - Other - pillow, etc.



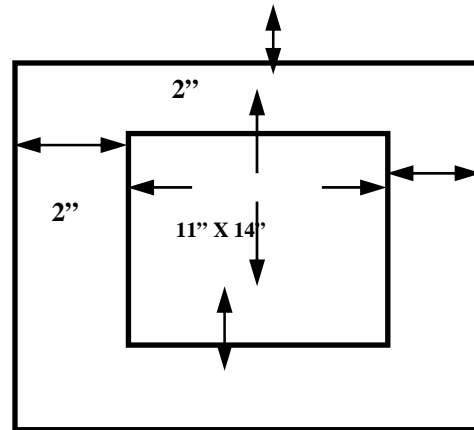
Rules for Framed Work

Frames on all framed work should be no larger than 2".

The dimension of work inside of frame should be no larger than 11" X 14" (overall dimension 15" X 18" including frame.)

Overall framed work should be no larger than 15" X 18".

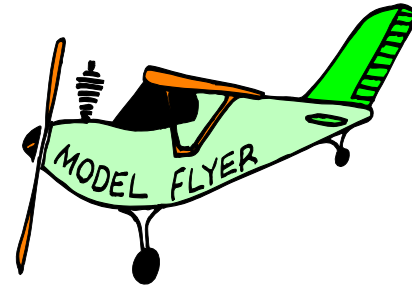
Unframed work should be no larger than 11" X 14".



DIVISION 4 - ADULT CRAFTS

This division ***does not*** include stitched items. Multi-piece items must be mounted for display. **We cannot accept exhibits larger than 2 cubic feet (24" x 12" x 12")**. Judges will consider originality, technique, composition, difficulty, and overall eye appeal. Models must be mounted well or in a case to avoid breakage.

- 315. Model - Vehicle
- 316. Model - Other
- 317. Flower Arrangement - Wall - **framed no larger than 15" X 18"** (See page 4 for rules.)
- 318. Flower Arrangement - Table Centerpiece
- 319. Wood Craft - Carved
- 320. Wood Craft - Wood burning
- 321. Wood Craft - Scroll Saw
- 322. Wood Craft - Fret Work
- 323. Wood Craft - Portrait
- 324. Wood Craft- Lathe Turning
- 325. Non-Fabric Wreath - vine, straw, non-holiday
- 326. Wall Hanging - Non-holiday - Non-needlework
- 327. Miniature - Miscellaneous
- 328. Jewelry - Paper
- 329. Jewelry - Plastic
- 330. Jewelry - Gemstone/Beads
- 331. Jewelry - Fabric
- 332. Jewelry - Porcelain
- 333. Jewelry - Metal
- 334. Jewelry - Other
- 335. Basket - Original
- 336. Basket - Kit
- 337. Embossing - Rubber Stamp Art
- 338. Wearable Art - hair bows, decorated hat, decorated shoes
- 339. Ceramic, not fired
- 340. Miscellaneous - Adult Craft
- 341. Miscellaneous - Scrapbook
- 342. Stained Glass items



DIVISION 5 - ADULT HOLIDAY HOUSE

All Holiday related items must be entered in Holiday House with the exception of ceramics and art work.

The overall dimensions of entries can not be any larger than 2 cubic feet - (24" x 12" x 12".)

343. Holiday House - Fabric wreath - All
344. Holiday House - Vines and Non Fabric - All Holidays
345. Holiday House - Table Centerpiece - All Holidays
346. Holiday House - Christmas Tree Ornaments - Set of 3 - Sewn
347. Holiday House - Christmas Tree Ornaments - Set of 3 - Crocheted or knitted
348. Holiday House - Christmas Tree Ornaments - Set of 3 - Plastic canvas
349. Holiday House - Christmas Tree Ornaments - Set of 3 - Other
350. Holiday House - Christmas Tree Ornament - Tree Topper
351. Holiday House - Christmas Stocking - Cross or Count Stitch
352. Holiday House - Christmas Stocking - Knitted or Crocheted
353. Holiday House - Christmas Stocking - Other
354. Holiday House - Holiday Hanging - Framed Needlework, **no larger than 15" X 18" overall dimension, frame included. See page 4 for rules.**
355. Holiday House - Holiday Hanging - Other
356. Holiday House - Holiday Pillow - one or two
357. Holiday House - Christmas Tree Skirt
358. Holiday House - Christmas Table Cover - Placemat - Set (two or more)
359. Holiday House - All Table Cover - Runner
360. Holiday House - Mantle Decoration
361. Holiday House - Decoration - Other



DIVISION 6 - ADULT ART WORK

All work must be **original** and framed and matted appropriately for medium. The only exception to being framed include tole painting and folk art. **The dimension of framed entries should be no larger than 15"x18", frame included. Unframed items should be no larger than 11" X 14". See page 4 for rules for framed items.**

Hangers must be attached for wall hangings and art.

- 362. Adult - Oil Painting
- 363. Adult - Acrylic Painting
- 364. Adult - Pencil & Charcoal Drawing
- 365. Adult - Pastel
- 366. Adult - Pen and Ink
- 367. Adult - Watercolor
- 368. Adult - Tole Painting
- 369. Adult - Folk Art - Metal
- 370. Adult - Folk Art - Other
- 371. Adult - Misc. Art Work



DIVISION 7 - ADULT PHOTOGRAPHY

All work must be appropriately framed and matted including hanger on back. **The dimension of framed entries should be no larger than 15"x18", frame included. See page 6 for rules.**

Definitions of classes:

Still Life: A small arrangement of anything.

Landscape: Panoramic outdoor photography (Panoramic view not print).

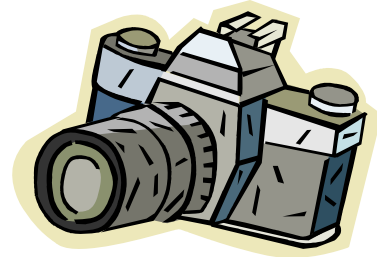
Nature/Wildlife: Non-panoramic outdoor photography.

Miscellaneous: Any unusual subject that does not apply to any of the above.

** Photos that have mixed color (black & white with some color) goes in the color class.*

** Photos with sepia effect or monotone goes in the black & white class.*

- 372. Adult Photography—Black and White—Still Life
- 373. Adult Photography—Black and White—Landscape
- 374. Adult Photography—Black and White—Portrait—People
- 375. Adult Photography—Black and White—Portrait—
- 376. Adult Photography—Black and White—Nature/Wildlife
- 377. Adult Photography—Black and White—Miscellaneous
- 378. Adult Photography—Color—Still Life
- 379. Adult Photography—Color—Landscape
- 380. Adult Photography—Color—Portrait—People
- 381. Adult Photography—Color—Portrait—Pets
- 382. Adult Photography—Color—Nature/Wildlife
- 383. Adult Photography—Color—Miscellaneous



DIVISION 8 - ADULT CERAMICS

All items must be finished appropriately with bottoms done and glazes inside and out. Date and sign each piece. Bottoms should not be covered. Pottery must be thrown and fired. No multi-piece items will be accepted.

- 384. Adult Ceramics - Stain Antiquing
- 385. Adult Ceramics - Glaze
- 386. Adult Ceramics - Stain
- 387. Adult Ceramics - Pottery



DIVISION 9 - DECORATED CLOTHING

Decorated clothing is judged only on the decoration, not the construction of the item. **Items must be on a hanger and covered with a plastic bag.**

- 388. Decorated clothing—Paint—Fabric Appliqué—glued/paint applied
- 389. Decorated clothing—Free Form—Original Design
- 390. Decorated clothing—Stamped Design
- 391. Decorated Clothing—Color Stitch—Series of dots with paint that creates a design
- 392. Decorated clothing—Gemstones, beads, sequins
- 393. Adult and Children - Purchased clothing - Hand Decorated
- 394. Adult and Children - Purchased accessories - Hand Decorated - purse, scarf, socks, hats, etc.



You may MAIL, BRING or FAX ENTRY FORM TO:

Gwinnett Cooperative Extension
Adult Fair Entry
750 South Perry Street—Suite 400
Lawrenceville, GA 30046

FAX: 678-377-4030

(Please call us to make sure we received your fax.)

Questions: 678-377-4010
Forms are located on the web:
www.gwinnettcountyfair.com

DEADLINE IS AUGUST 23, 2010

FORMS MUST BE IN OUR OFFICE BY AUGUST 23, 2010 BEFORE 5:00 P.M.

**GWINNETT COUNTY FAIR
PRE-REGISTRATION FORM**

This form is due in our office no later than 5:00 p.m., August 23, 2010. We will not accept any items that were not pre-registered on take-in day, Monday, Sept. 13th!

Fill out form completely and **legibly**. Mail, bring or fax to the Gwinnett Extension Office - 750 South Perry St., Suite 400, Lawrenceville, GA 30046, ATTN: Adult or Youth Fair Entry. Our fax number is 678-377-4030. Each Exhibit item must be securely labeled on the underside with your name, address and phone number.

Name _____ Day Time Number _____ Cell No. _____

Address _____

City

Zip

E-Mail _____

Note: You can enter only one item per class and only 10 items per exhibitor !

	Division Example of how to fill out: Division 4 Adult Crafts	Class Example of how to fill out: Class 329 Jewelry – Gemstone/Beads	Write a brief description of item Example of how to fill out: Necklace with red, white and blue beads.
1.			
2.			
3.			
4.			
5.			
6.			
7.			
8.			
9.			
10.			