

GWINNETT COUNTY FAIR

September 16 - 26, 2010

**EXHIBIT DATE
September 13, 2010**



YOUTH EXHIBITS

ATTENTION!

PRE-REGISTRATION IS REQUIRED

AUGUST 23, 2010 DEADLINE

Take-In: 1:00 - 6:30 p.m. Monday, September 13, 2010.

Please enter the fair grounds at Gate 1 off Davis Road.

Clothing Pick-Up: 4:00—5:30 p.m. Tuesday, September 14, 2010. (Any clothing not picked up by 5:30 p.m. will be held for general pick-up.)

Pick-Up: 2:30 - 6:30 p.m. Monday, September 27, 2010.

1. IMPORTANT!! All exhibits must be the work of an amateur exhibitor. Exhibits must be work completed since **September 2009** and not exhibited in any previous Gwinnett County Fair.
2. We will not accept any new items or entries that were not pre-registered by **Aug. 23rd!!!** The enclosed entry form must be returned to the Gwinnett Extension Office no later than **August 23, 2010**.
3. All exhibits must be clean and completely finished. Instructions must be followed or it will be disqualified.
4. ***Exhibitors can enter only one item per class.*** Note: Only 10 items per exhibitor will be allowed.
5. Before submitting, exhibits must be labeled securely on the underside of items with name, address, and phone number of exhibitor.
6. Judges will consider appropriate criteria for each division.
7. When the same item qualifies for more than one category, the exhibitor, (you), will choose the one to enter. Duplicates in a category cannot be placed in miscellaneous.
8. Entries in classes without competition may receive first or second place ribbon and second place money. The prize money is **\$7.00**—1st place, **\$5.00**—2nd place and **\$4.00**—3rd place. Premiums will be paid at pick-up.
9. **THE WRITTEN JUDGES REPORT IS FINAL!**
10. For the overall winner a Certificate and a check for an additional \$50 will be presented. Total points must exceed 14 and exhibitors must have entered in at least 3 divisions. A point system will be used to determine a winner - Blue ribbon will count 3 points, Red ribbon will count 2 points and White ribbon will count 1 point. The Adult Overall Participation award winner for the past year may exhibit but will not be eligible for overall award for two calendar years.
11. The GCFL&A, Inc., it's Officials, and County Extension Agents are not responsible for lost, damaged, or unclaimed items.

WE DO NOT RECOMMEND EXHIBITING TREASURED ITEMS.

DIVISION 1—Youth Food Preservation

All entries must have been preserved since September 2009.

Exhibitors must indicate on lid the processing method (water bath or pressure) and the processing time used, OTHERWISE IT CAN NOT BE JUDGED! Clean standard canning glass jars and standard lids must be used. All lids must be sealed. Dehydrated foods should be exhibited in canning jars but not sealed. Rings must be left on jars.

Youth - Grades 6th - 8th

- 600. Jelly, Jams, Preserves - ½ or 1 pint
- 601. Vegetables - 1 pint or 1 quart
- 602. Dehydrated Foods (Classes divided according to entries) - ½ or 1 pint
- 603. Salsa - 1 pint or 1 quart

Youth - Grades 9th - 12th

- 604. Jelly, Jams, Preserves - ½ or 1 pint
- 605. Pickles, Relishes- ½ or 1 pint
- 606. Fruit-1 pint or 1 quart
- 607. Vegetables - 1 pint or 1 quart
- 608. Dehydrated Foods
(Classes divided according to entries) ½ or 1 pint
- 609. Salsa - 1 pint or 1 quart



DIVISION 2 — Youth Clothing

All clothing must be clean, on hangers and covered with a clear plastic bag.

Items must be made by youth and be stitched, not purchased.

Clothing must be picked up on Tuesday, Sept. 14, between 4:00 and 5:30 p.m.

Youth - Grades 4th - 5th

- 610. Casual Outfit-Jumper, Skirt and Blouse, etc.
- 611. Accessories - Shawl, Apron, etc.

Youth - Grades 6th - 8th

- 612. Casual Outfit - Jumper, Skirt and Blouse, etc.
- 613. Accessories - Shawl, Apron, etc.

Youth—Grades 9th—12th

- 614. Casual Outfit—Jumper, Skirt and Blouse, etc.
- 615. Accessories—Shawl, Apron, etc.



DIVISION 3—Youth Needlework

These items must have stitching. Needlework must be in a final form for use; pictures must be framed. Wall hangings must have fasteners or dowel for hanging. Multi-piece crafts must be mounted or appropriately attached for display. No penciled or printed guidelines should be visible. Items not meeting these criteria will be disqualified. Judges will consider uniformity of stitches, absence of visible knots or loose threads, attention is given to detail, appropriateness of materials, and eye appeal.

The dimension of framed entries can be no larger than 15" X 18", frame included. See page 12 for rules.

Youth-Grades 1st—3rd

- 616. Wall Hanging
- 617. Creative Stitching (Cross Stitch, Needle-point, etc.)
- 618. Creative Stitching - Holiday
- 619. Afghan - Stitched
- 620. Miscellaneous

Youth-Grades 4th—5th

- 621. Wall Hanging
- 622. Creative Stitching (Cross Stitch, Needle- point, etc.)
- 623. Creative Stitching- (Holiday)
- 624. Creative Stitching- Other
- 625. Afghan - Stitched
- 626. Miscellaneous



Youth-Grades 6th—7th

- 627. Wall Hanging
- 628. Creative Stitching (Cross Stitch, Needlepoint, etc.)
- 629. Creative Stitching- (Holiday)
- 630. Creative Stitching- Other
- 631. Afghan—Stitched
- 632. Miscellaneous

Youth—Grades 8th—9th

- 633. Wall Hanging
- 634. Creative Stitching (Cross Stitch, Needlepoint, etc.)
- 635. Creative Stitching- (Holiday)
- 636. Creative Stitching- Other
- 637. Afghan - Stitched
- 638. Miscellaneous

Youth - Grades 10th—12th

- 639. Wall Hanging
- 640. Creative Stitching (Cross Stitch, Needlepoint, etc.)
- 641. Creative Stitching- (Holiday)
- 642. Creative Stitching- Other
- 643. Afghan - Stitched
- 644. Miscellaneous

DIVISION 4—Youth Crafts

This division does not include stitched items. Multi-pieced items must be mounted for display. **We cannot accept exhibits larger than 2 cubic feet (24" X 12" X 12")**. Judges will consider originality, technique, composition, difficulty, and overall eye appeal. Models must be mounted well or in a case to avoid breakage.

Youth—Grades 1st—3rd

645. Nature Crafts-Wood, Clay, etc.

646. Miscellaneous

Youth - Grades 4th - 5th

647. Nature Crafts-Wood, Clay, etc.

648. Model/ Kit

649. Miscellaneous

Youth - Grades 6th - 7th

650. Nature Crafts-Wood, Clay, etc.

651. Model/ Kit

652. Memory Book/Scrapbook

653. Miscellaneous

Youth - Grades 8th - 9th

654. Nature Crafts-Wood, Clay, etc.

655. Model/ Kit

656. Memory Book/Scrapbook

657. Miscellaneous

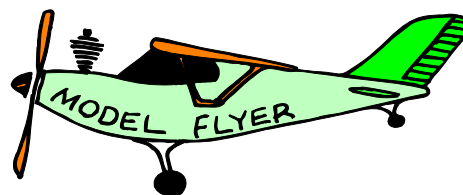
Youth - Grades 10th - 12th

658. Nature Crafts-Wood, Clay, etc.

659. Model/ Kit

660. Memory Book/Scrapbook

661. Miscellaneous



DIVISION 5—Youth Holiday House

All Holiday related items must be entered in Holiday House with the exception of ceramics and art work.

The overall dimension of entries can not be any larger than 2 cubic feet (24" X 12" X 12").

Youth - Grades 1st - 3rd

- 662. Decorations - All Ornaments
- 663. Christmas Decorations
- 664. Decorations - Other
- 665. Decorations - Centerpiece, Table
- 666. Decorations - Cards
- 667. Decorations - Wall Hanging



Youth - Grades 4th - 5th

- 668. Decorations - All Ornaments
- 669. Christmas Decorations
- 670. Decorations—Other
- 671. Decorations—Centerpiece, Table
- 672. Decorations—Cards
- 673. Decorations - Wall Hanging



Youth—Grade 6th—7th

- 674. Decorations—All Ornaments
- 675. Christmas Decorations
- 676. Decorations—Other
- 677. Decorations - Centerpiece, Table
- 678. Decorations—Cards
- 679. Decorations—Wall Hanging



Youth—Grade 8th—9th

- 680. Decorations—All Ornaments
- 681. Christmas Decorations
- 682. Decorations—Other
- 683. Decorations - Centerpiece, Table
- 684. Decorations—Cards
- 685. Decorations- Wall hanging

Youth—Grades 10th-12th

- 686. Decorations-All Ornaments
- 687. Christmas Decorations
- 688. Decorations—Other
- 689. Decorations - Centerpiece, Table
- 690. Decorations—Cards
- 691. Decorations—Wall Hanging



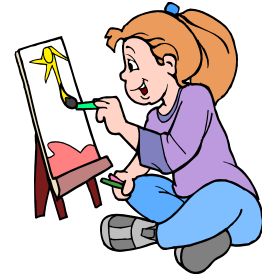
DIVISION 6—Youth Art Work

All entries must be **original** and framed and matted appropriately for medium. The only exception to being framed include tole painting and folk art. Hangers must be attached for wall hangings and art.

The dimension of framed entries should be no larger than 15" X 18", frame included. See page 12 for rules.

Youth - Grades 1st - 3rd

- 692. Stenciling
- 693. Original Art - Crayon
- 694. Original Art - Ink or Pencil
- 695. Original Art - Magic Marker
- 696. Original Art - Water Color
- 697. Original Art - Other
- 698. Non-Original Art - Numbered Artwork, Duplicate Scenes



Youth - Grades 4th - 5th

- 699. Stenciling
- 700. Original Art - Crayon
- 701. Original Art - Ink or Pencil
- 702. Original Art - Magic Marker
- 703. Original Art - Water Color
- 704. Original Art - Other
- 705. Non-Original Art - Numbered Artwork, Duplicate Scenes

Youth - Grades 6th - 7th

- 706. Stenciling
- 707. Original Art - Ink, Pencil, Magic Marker
- 708. Original Art-Acrylic/Oil
- 709. Original Art - Water Color
- 710. Original Art - Charcoal
- 711. Original Art - Other
- 712. Non-Original Art Numbered Artwork, Duplicate Scenes

Youth - Grades 8th - 9th

- 713. Stenciling
- 714. Original Art—Ink, Pencil, Magic Marker
- 715. Original Art—Acrylic/Oil
- 716. Original Art - Water Color
- 717. Original Art - Charcoal
- 718. Original Art - Other
- 719. Non-Original Artwork, Duplicate Scenes

Youth - Grades 10th - 12th

- 720. Stenciling
- 721. Original Art - Ink, Pencil Magic marker
- 722. Original Art -Acrylic/Oil
- 723. Original Art - Water Color
- 724. Original Art - Charcoal
- 725. Original Art - Other
- 726. Non-Original Artwork, Duplicate Scenes

DIVISION 7—Youth Photography

All work must be appropriately framed and matted including hanger on back.
The dimension of framed entries should be no larger than 15" X 18", frame included. See page 12 for rules.

Definitions of classes:

Still Life: A small arrangement of anything.

Landscape: Panoramic outdoor photography (Panoramic view not print.)

Nature/Wildlife: Non-panoramic outdoor photography.

Miscellaneous: Any unusual subject that does not apply to any of the above.

* Photos that have mixed color (black & white with some color) goes in the black & white class.

* Photos with sepia effects or monotone goes in the black & white class.

Youth - Grades 1st–3rd

- 727. Black & White Still Life
- 728. B & W Landscape
- 729. B & W Portrait—People
- 730. B & W Portrait—Pets
- 731. B & W Nature/Wildlife
- 732. B & W Miscellaneous
- 733. Color Still Life`
- 734. Color Landscape
- 735. Color Portrait—People
- 736. Color Portrait—Pets
- 737. Color Nature/Wildlife
- 738. Color Miscellaneous

Youth - Grades 4th–5th

- 739. Black & White Still Life
- 740. B & W Landscape
- 741. B & W Portrait—People
- 742. B & W Portrait—Pets
- 743. B & W Nature/Wildlife
- 744. B & W Miscellaneous
- 745. Color Still Life
- 746. Color Landscape
- 747. Color Portrait—People
- 748. Color Portrait—Pets
- 749. Color Nature/Wildlife
- 750. Color Miscellaneous

Youth - Grades 6th–7th

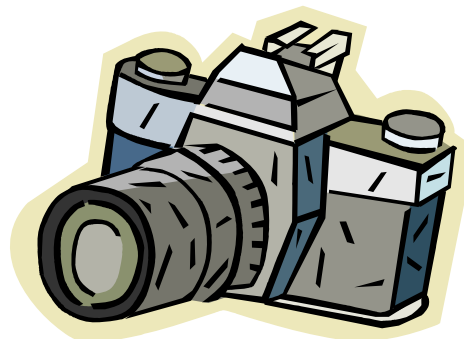
- 751. Black & White Still Life
- 752. B & W Landscape
- 753. B & W Portrait— People
- 754. B & W Portrait—Pets
- 755. B & W Nature/Wildlife
- 756. B & W Miscellaneous
- 757. Color Still Life
- 758. Color Landscape
- 759. Color Portrait—People
- 760. Color Portrait—Pets
- 761. Color—Nature/Wildlife
- 762. Color Miscellaneous

Youth - Grades 8th - 9th

- 763. Black & White Still Life
- 764. B & W Landscape
- 765. B & W Portrait—People
- 766. B & W Portrait—Pets
- 767. B & W Nature/Wildlife
- 768. B & W Miscellaneous
- 769. Color Still Life
- 770. Color Landscape
- 771. Color Portrait—People
- 772. Color Portrait—Pets
- 773. Color Nature/Wildlife
- 774. Color Miscellaneous

Youth - Grades 10th - 12th

- 775. Black & White Still Life
- 776. B & W Landscape
- 777. B & W Portrait—People
- 778. B & W Portrait—Pets
- 779. B & W Nature/Wildlife
- 780. B & W Miscellaneous
- 781. Color Still Life
- 782. Color Landscape
- 783. Color Portrait—People
- 784. Color Portrait—Pets
- 785. Color Nature/Wildlife
- 786. Color Miscellaneous



DIVISION 8—Youth Ceramics

This division includes fired items only. All others should be entered in the Youth Crafts division.

All items must be finished appropriately with bottoms done and glazes inside and out. Date and sign each piece. Bottoms should not be covered. Pottery must be thrown and fired. No multi-piece items will be accepted.

Youth - Grades 1st - 3rd

787. Ceramics—Original

788. Ceramics—Bought Item

Youth - Grades 4th - 5th

789. Ceramics—Original

790. Ceramics—Bought Item

Youth - Grades 6th - 7th

791. Ceramics—Original

792. Ceramics—Bought Item

Youth - Grades 8th - 9th

793. Ceramics—Original

794. Ceramics—Bought Item

Youth - Grades 10th - 12th

795. Ceramics—Original

796. Ceramics—Bought Item



DIVISION 9—Youth Decorated Clothing

Decorated clothing is judged only on the decoration, not the construction of the item. **Items must be on a hanger and covered with a plastic bag.**

Youth - Grades 1st - 3rd

797. Decorated Clothing

Youth - Grades 4th-5th

798. Decorated Clothing

Youth - Grades 6th - 7th

799. Decorated Clothing

Youth - Grades 8th - 9th

800. Decorated Clothing

Youth - Grades 10th - 12th

801. Decorated Clothing



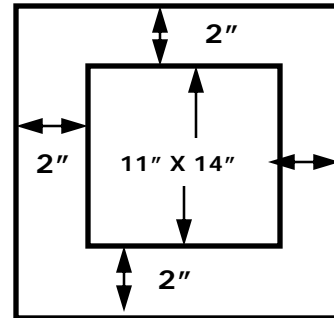
RULES FOR FRAMED WORK

Frames on all framed work should be no larger than 2".

The dimension of work inside of frame should be no larger than 11" X 14"
(overall dimension 15" X 18" including frame.)

Overall framed work should be no larger than 15" X 18.

Unframed work should be no larger than 11" X 14".



You may MAIL, BRING, or FAX ENTRY FORM TO:

Gwinnett Cooperative Extension
Youth Fair Entry
750 South Perry Street—Suite 400
Lawrenceville, GA 30045

Fax: 678-377-4030

(Please call to make sure we received your fax.)

Questions: 678-377-4010
Additional forms located on the web:
www.gwinnettcountyfair.com

**DEADLINE IS AUGUST 23, 2010
FORMS MUST BE IN OUR OFFICE BY AUGUST 23, 2010
BEFORE 5:00 P.M.**

**GWINNETT COUNTY FAIR
PRE-REGISTRATION FORM**

This form is due in our office no later than 5:00 p.m., August 23, 2010. We will not accept any items that were not pre-registered on take-in day, Monday, Sept. 13th!

Fill out form completely and **legibly**. Mail, bring or fax to the Gwinnett Extension Office - 750 South Perry St., Suite 400, Lawrenceville, GA 30046, ATTN: Adult or Youth Fair Entry. Our fax number is 678-377-4030. Each Exhibit item must be securely labeled on the underside with your name, address and phone number.

Name _____ Day Time Number _____ Cell No. _____

Address _____

City

Zip

E-Mail _____

Note: You can enter only one item per class and only 10 items per exhibitor !

	Division Example of how to fill out: Division 4 Adult Crafts	Class Example of how to fill out: Class 329 Jewelry – Gemstone/Beads	Write a brief description of item Example of how to fill out: Necklace with red, white and blue beads.
1.			
2.			
3.			
4.			
5.			
6.			
7.			
8.			
9.			
10.			